

CUSTOMER SERVICE CENTER

35,278 SF AVAILABLE FOR LEASE



5701 E. Hillsborough Avenue, Tampa, FL 33610
www.NetparkTampaBay.net



SUITE 2400

Property Highlights

- Convenient Location
- Renovated Common Areas
- Childcare Center
- Dining Facility
- Fitness Center
- Auditorium & Conference Room
- 24/7 Security
- Redundant Electric Power
- Multiple Telecom Providers
- Ample Parking (6/1,000 SF)
- Hartline Bus Transfer Center

For information and tour, please contact:

Vesna Pilicar Cherry
(813) 621-7575 | (813) 629-0081
vcherry@bluettjuno.com

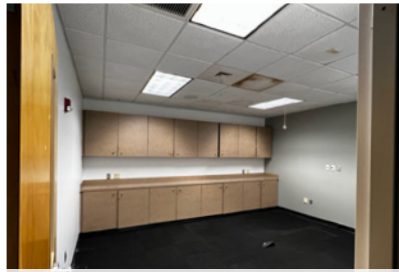


1. Lobby Internet Bar 2. Auditorium 3. Dining Facility 4. Fitness Center

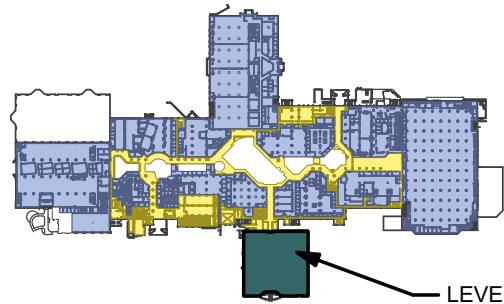
SUITE 2400 - 35,278 SF



Suite Entry



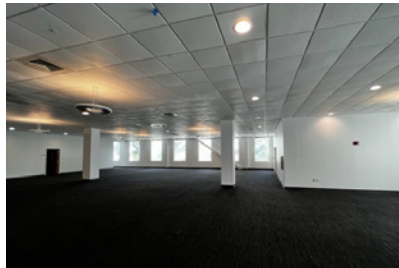
Mail Room



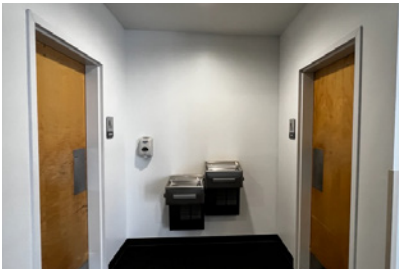
LEVEL TWO
SUITE 2400



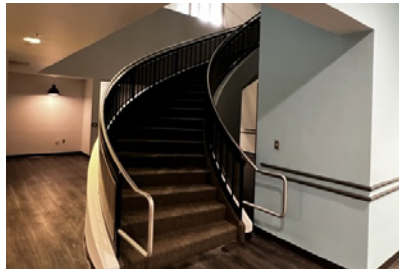
Open Area



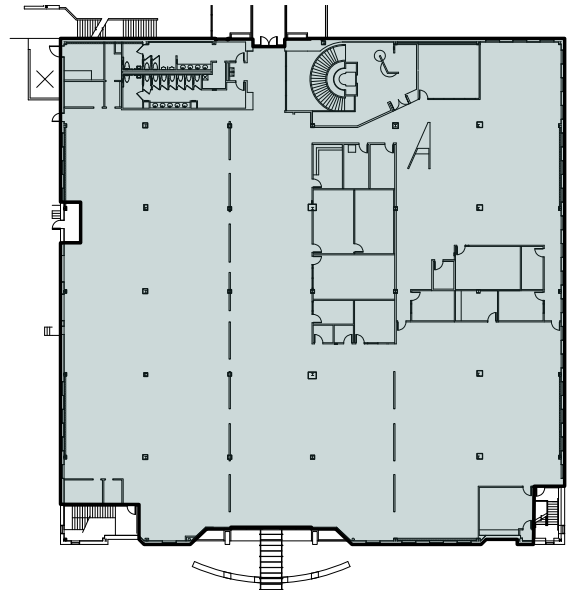
Open Area



Restrooms



Stairwell to Suite 1400 Below



Space Highlights

- Combination of Offices and Open Space
- 13 Offices
- 3 Conference Rooms
- Training Room
- 2 Break Rooms
- 2 Restrooms
- Lactation Room
- Open Space for Workstations
- 3 Electric Rooms
- Mail Room and Storage Room
- Individual HVAC and Electric Systems, Separately Metered Utilities
- 6/1,000 SF Parking Ratio

* This space can be combined with the first floor space below for a total of 70,556 SF

For information and tour, please contact:

Vesna Pilicar Cherry
(813) 621-7575 | (813) 629-0081
vcherry@bluettjuno.com



5701 E. Hillsborough Avenue, Tampa, FL 33610
www.NetparkTampaBay.net