

OFFICE SPACE

12,702 SF AVAILABLE FOR LEASE



5701 E. Hillsborough Avenue, Tampa, FL 33610
www.NetparkTampaBay.net



Property Highlights

- Convenient Location
- Renovated Common Areas
- Childcare Center
- Dining Facility
- Fitness Center
- Auditorium & Conference Room
- 24/7 Security
- Redundant Electric Power
- Multiple Telecom Providers
- Ample Parking (6/1,000 SF)
- Hartline Bus Transfer Center

For information and tour, please contact:

Vesna Pilicar Cherry
(813) 621-7575 | (813) 629-0081
vcherry@bluettjuno.com



1. Lobby Internet Bar 2. Auditorium 3. Dining Facility 4. Fitness Center

SUITE 2140 - 12,702 SF

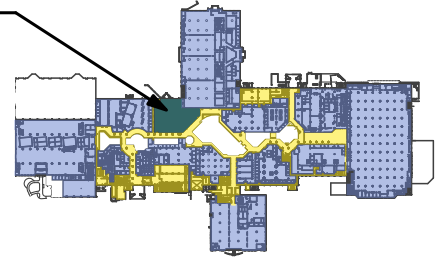


Secured Internal Entry

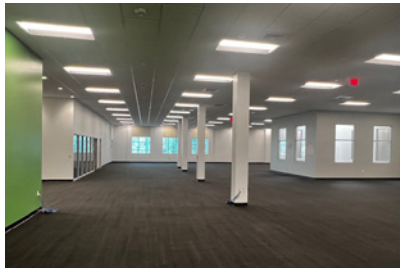


Reception Area

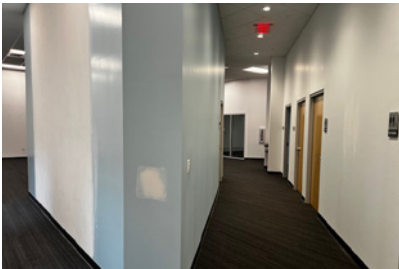
LEVEL TWO
SUITE 2140



Open Space



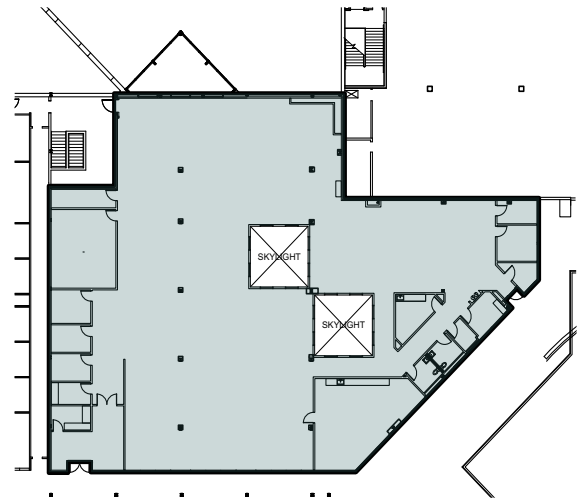
Open Space



Hallway



Office



Space Highlights

- Combination of Offices and Open Space
- Reception Area
- 5 Offices
- Conference Room and Huddle Room
- Print Area
- Break Room
- Lactation Room
- 2 Restrooms
- Open Space for Workstations
- Data Room and Electric Room
- Skylights
- Individual HVAC and Electric Systems, Separately Metered Utilities
- 6/1,000 SF Parking Ratio

For information and tour, please contact:

Vesna Pilicar Cherry
(813) 621-7575 | (813) 629-0081
vcherry@bluettjuno.com



5701 E. Hillsborough Avenue, Tampa, FL 33610
www.NetparkTampaBay.net