

OFFICE SPACE

21,728 SF AVAILABLE FOR LEASE



5701 E. Hillsborough Avenue, Tampa, FL 33610
www.NetparkTampaBay.net



SUITE 1417

Property Highlights

- Convenient Location
- Renovated Common Areas
- Childcare Center
- Dining Facility
- Fitness Center
- Auditorium & Conference Room
- 24/7 Security
- Redundant Electric Power
- Multiple Telecom Providers
- Ample Parking (6/1,000 SF)
- Hartline Bus Transfer Center

For information and tour, please contact:

Vesna Pilicar Cherry
(813) 621-7575 | (813) 629-0081
vcherry@bluettjuno.com



1



2



3



4

1. Lobby Internet Bar 2. Auditorium 3. Dining Facility 4. Fitness Center

SUITE 1417 - 21,728 SF



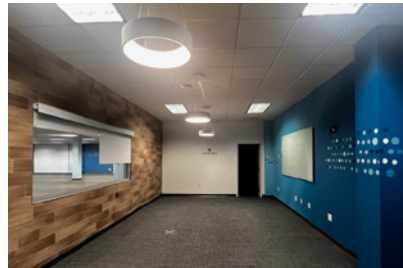
Open Space



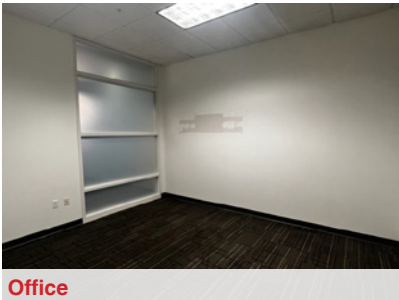
Training Room



Break Room



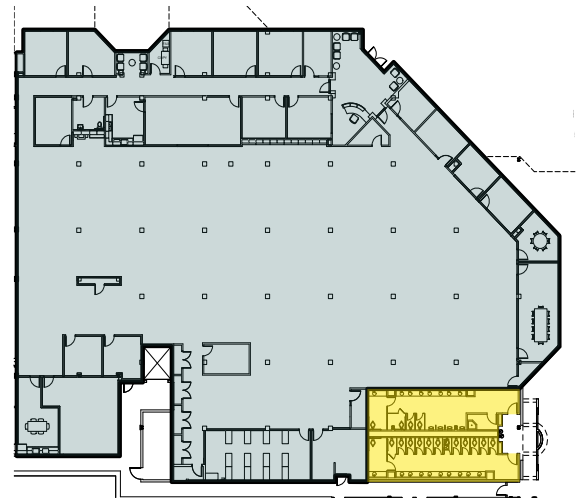
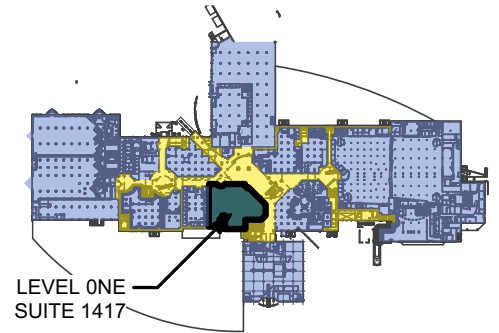
Conference Room



Office



Hallway



Space Highlights

- Combination of Offices and Open Space
- Reception Area
- 16 Offices
- 4 Conference Rooms
- 1 Training Room
- 2 Break Rooms
- Open Space for Workstations
- 2 Restrooms
- Data Room and Electric Room
- Copy/Mail Room
- Storage Rooms
- Individual HVAC and Electric Systems, Separately Metered Utilities
- 6/1,000 SF Parking Ratio

For information and tour, please contact:

Vesna Pilicar Cherry
(813) 621-7575 | (813) 629-0081
vcherry@bluettjuno.com



5701 E. Hillsborough Avenue, Tampa, FL 33610
www.NetparkTampaBay.net