

CUSTOMER SERVICE CENTER

35,278 SF AVAILABLE FOR LEASE



5701 E. Hillsborough Avenue, Tampa, FL 33610
www.NetparkTampaBay.net



SUITE 1400

Property Highlights

- Convenient Location
- Renovated Common Areas
- Childcare Center
- Dining Facility
- Fitness Center
- Auditorium & Conference Room
- 24/7 Security
- Redundant Electric Power
- Multiple Telecom Providers
- Ample Parking (6/1,000 SF)
- Hartline Bus Transfer Center

For information and tour, please contact:

Vesna Pilicar Cherry
(813) 621-7575 | (813) 629-0081
vcerry@bluettjuno.com



1



2



3



4

1. Lobby Internet Bar 2. Auditorium 3. Dining Facility 4. Fitness Center

SUITE 1400 - 35,278 SF



Outside Entry



Main Entrance



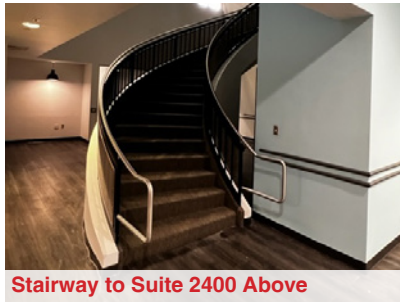
Open Area



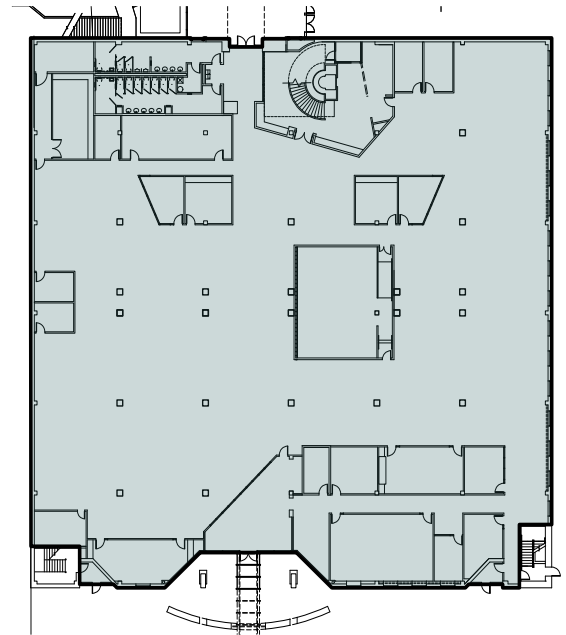
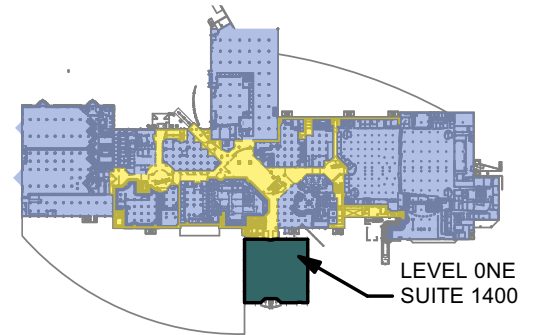
Open Area



Data Room



Stairway to Suite 2400 Above



Space Highlights

- Combination of Offices and Open Space for Workstations
- Reception Area
- 12 Offices
- 2 Conference Rooms
- 2 Training Rooms
- Break Room
- 2 Restrooms
- Data Room, Copy Room, and Electric Room
- 2 Storage Rooms
- Individual HVAC and Electric Systems, Separately Metered Utilities
- 6/1,000 SF Parking Ratio

* This space can be combined with the second floor space above for a total of 70,556 SF

For information and tour, please contact:

Vesna Pilicar Cherry
(813) 621-7575 | (813) 629-0081
vcherry@bluettjuno.com



5701 E. Hillsborough Avenue, Tampa, FL 33610
www.NetparkTampaBay.net