

# 1,577 SF OFFICE SPACE

## AVAILABLE FOR LEASE

5701 E. Hillsborough Avenue, Tampa, FL 33610  
www.NetparkTampaBay.net

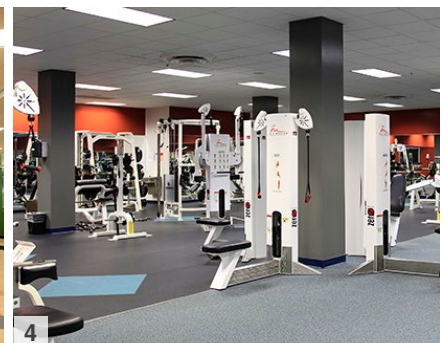
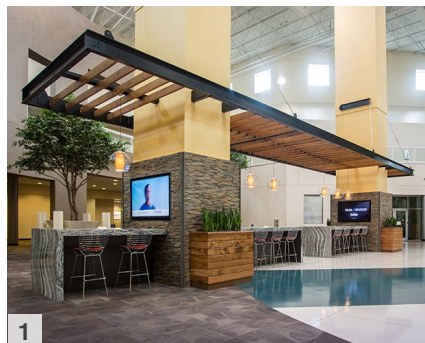


### Property Highlights

- Convenient Location
- Renovated Common Areas
- Childcare Center
- Dining Facility
- Fitness Center
- Auditorium & Conference Room
- 24/7 Security
- Redundant Electric Power
- Multiple Telecom Providers
- Ample Parking (6/1,000 SF)
- Hartline Bus Transfer Center

**For information and tour, please contact:**

Vesna Pilicar Cherry  
(813) 621-7575 | (813) 629-0081  
[vcherry@bluettjuno.com](mailto:vcherry@bluettjuno.com)

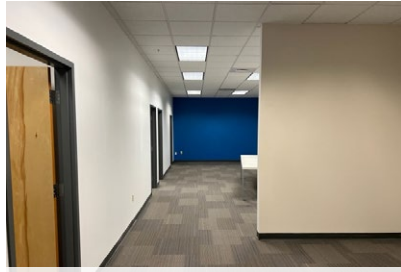


1. Lobby Internet Bar 2. Auditorium 3. Dining Facility 4. Fitness Center

# SUITE 2453 - 1,577 SF



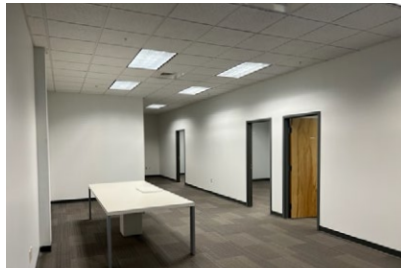
Reception Area



Open Space



Open Space



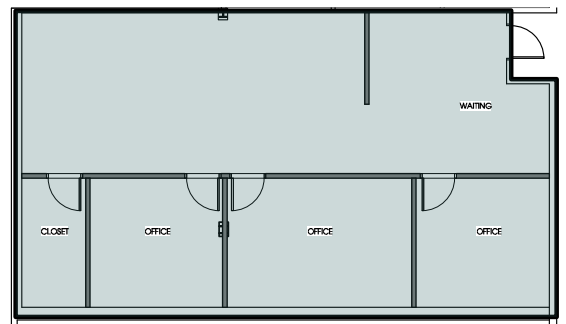
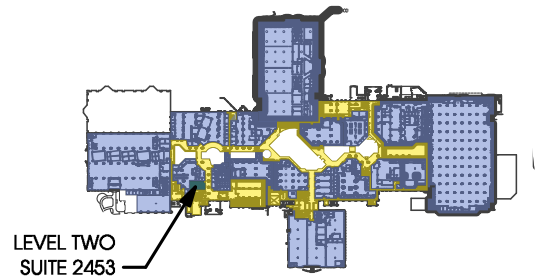
Open Space



Open Space



Large Office or Conference Room



## Space Highlights

- 1,577 SF Office Space
- 2 Offices
- 1 Office / Conference Room
- Reception Area
- Open Space For Workstations
- 1 Closet / Electric / Data Room
- Individual HVAC and Electric Systems
- Parking Ratio: 6/1,000 SF

### For information and tour, please contact:

Vesna Pilicar Cherry  
(813) 621-7575 | (813) 629-0081  
[vcherry@bluettjuno.com](mailto:vcherry@bluettjuno.com)



5701 E. Hillsborough Avenue, Tampa, FL 33610  
[www.NetparkTampaBay.net](http://www.NetparkTampaBay.net)