

# FLEXIBLE FLOOR PLAN

**16,426 SF AVAILABLE FOR LEASE**



5701 E. Hillsborough Avenue, Tampa, FL 33610  
www.NetparkTampaBay.net



## Property Highlights

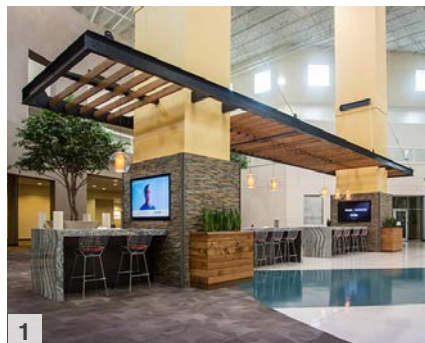
- Convenient Location
- Renovated Common Areas
- Childcare Center
- Dining Facility
- Fitness Center
- Auditorium & Conference Room
- 24/7 Security
- Redundant Electric Power
- Multiple Telecom Providers
- Ample Parking (6/1,000 SF)
- Hartline Bus Transfer Center

**For information and tour, please contact:**

Vesna Pilicar Cherry

(813) 621-7575 | (813) 629-0081

[vcherry@bluettjuno.com](mailto:vcherry@bluettjuno.com)



**1.** Lobby Internet Bar **2.** Auditorium **3.** Dining Facility **4.** Fitness Center

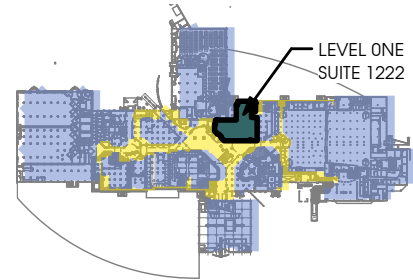
# SUITE 1222 - 16,426 SF



Entrance



Open Area



Break Room



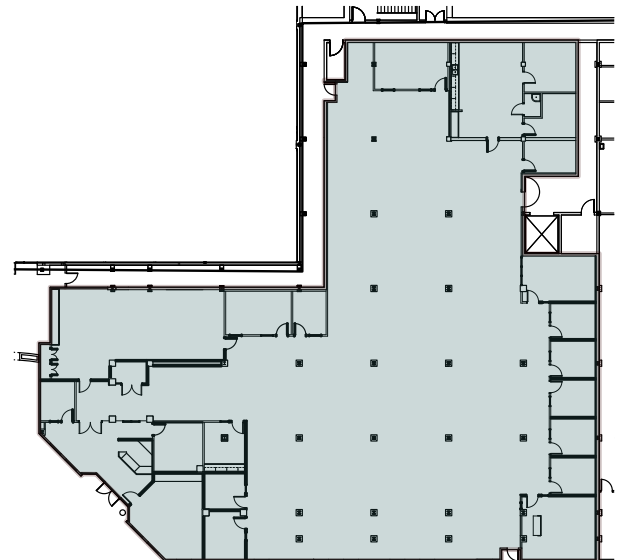
Mail Room



Data Room



Private Office



## Space Highlights

- 16,426 SF Mostly Open Floor Plan
  - Reception Area
  - 12 Offices
  - 2 Conference Rooms
  - Training Room
  - Break Room
  - 2 Supply Rooms and 1 Mail Room
  - Electric Room and Data Room
  - Individual HVAC and Electric Systems, Separately Metered Utilities
  - 6/1,000 Parking Ratio
- \* *Space Needs New Flooring*

### For information and tour, please contact:

Vesna Pilicar Cherry  
(813) 621-7575 | (813) 629-0081  
[vcherry@bluettjuno.com](mailto:vcherry@bluettjuno.com)



5701 E. Hillsborough Avenue, Tampa, FL 33610  
[www.NetparkTampaBay.net](http://www.NetparkTampaBay.net)